

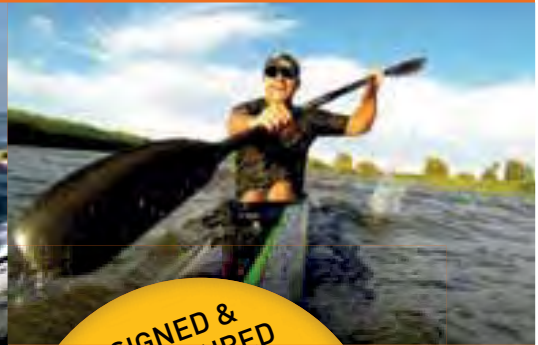


# ULTIMATE COMFORT

IN DEMANDING ENVIRONMENTS



## PRODUCT CATALOGUE 18



DRY CAGS • BASE LAYERS • MID LAYERS  
PADDLESUITS • PERTEX SHELLS  
BOATS • PADDLES • ACCESSORIES



T: +44(0) 1271 815828 E: [info@chillcheater.com](mailto:info@chillcheater.com) [www.chillcheater.com](http://www.chillcheater.com)



# PROFESSIONALS, ENTHUSIASTS AND FILM MAKERS CHOOSE REED...



## ULTIMATE COMFORT IN DEMANDING ENVIRONMENTS



“ Chillcheater gear keeps me warm but looks so cool! I love the Greenland style Tuiliq (pg 22), it's thin, lightweight and pliable so I'm able to do any roll with ease. Depending on the water or air temperature, you can wear whatever you prefer underneath, or just the Transpire Fleece (pg20), the Tuiliq is great for pool training too.

Also, another great wet gear combination I often wear in the summer is the Aquatherm Pre Bent Long Trousers (pg12) and Aquatherm Shorts Sleeve Touring Cag (pg7). The Touring Cag has a zippered neck that you can open and close with ease, and with one layer of fleece I'm as warm as I am wearing thin neoprene without the bulk and I love the way it looks.

On my 'Race Around Australia' I used the fleeces (pants, short and long sleeve top, and the lightweight Pertex - pg26) top and pants for dry land wind protection and for wind protection when paddling, which were all great. It's amazing what a difference a small lightweight garment over a layer of fleece is making!”

**FREYA HOFFMEISTER** – Endurance Paddler and world Record holder and first woman kayaker to paddle around Australia unassisted.

Reed have also been supplying garments to the film and TV industry for a number of years. The unique Transpire Fleece (pg20) and flesh coloured versions of our Aquatherm Suits have been keeping actors, stunt and film crews warm during prolonged filming in cold environments.

Our specialised clothing has appeared in all 5 Harry Potter Films, Pirates of the Caribbean, James Bond Movies, the Batman movies, In Tarzan, Game of Thrones, The Musketeers, Poldark, and Dr Who to name just a few productions.



### MADE IN THE UK, WORN WORLDWIDE...

We are delighted to showcase some more great styles and products designed to keep you warm and comfortable on and off the water. We continually upgrade and develop our fabrics and garments to ensure you get more warmth, stretch, strength, dryness and comfort when you're out working or just having fun on lakes, rivers or in the sea.

- WHY USE OUR GARMENTS?**
- WARM:** Incredible warmth to weight ratio.
- COMFORTABLE:** Dry-feel, soft knit inner surface is not sticky on your skin.
- WATERPROOF:** Keeps you dry with its waterproof outer membrane and fully taped seams.
- FLEXIBLE:** The full-stretch, fabric moves with your body.
- FAST DRYING:** Sheds water quickly helping to reduce the cooling effects of windchill.
- TOUGH:** Durable outer surface. With good care your Chillcheater should give you several years of use.
- LIGHTWEIGHT:** You can take it anywhere.
- PACKS UP SMALL:** Handy sized kit that packs up small for travelling.
- STYLISH:** Ergonomic cut for performance and function.
- ADDED VALUE:** One item can be used on its own or as part of a thermal layering system.



# OUR FOUR UNIQUE AND EFFECTIVE FABRICS



# HOW OUR LAYERING SYSTEM WORKS

# CONTENTS

1

## AQUATHERM™

The smooth polyurethane outer surface sheds water incredibly quickly, minimising the effects of windchill, which even on the warmest day can be a serious problem if you're wet. The matt black finish also maximises heat absorption from the sun and coupled with the heat from your body, maintains a thin layer of warm air or water between your skin and the fabric which provides a thermal barrier similar to a traditional wetsuit. Chillcheaters are much lighter, more flexible and easier to get on, and off!

2

## AQUATHERM FLEECE

Warmer than Aquatherm, this fabric has the same tough PU outer surface with the same durability, but differs in having a thicker softer brushed knit on the inside next to your skin. It has the same great stretch and return as Aquatherm. Aquatherm Fleece adds an extra 4mm distance between the wearer and the elements and has a superb low bulk to high warmth ratio. This fabric excels when used continuously in colder environments.

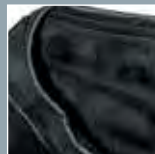
## QUALITIES OF AQUATHERM AND AQUATHERM FLEECE



**COMPACT**  
Ultralightweight fabric, efficient in all conditions, packs up small for travelling



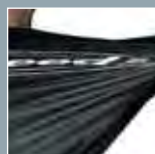
**OUTER SURFACE**  
Polyurethane, fast drying, UV protecting, water shedding, matt black and breathable



**INNER SURFACE**  
Soft feel, fast drying, polyester stretch knit, antifungally treated, non latex for allergy sufferers



**SEAMS**  
Durable, waterproof taping, covering seams for extra comfort



**STRETCHY & TOUGH**  
Twenty times more abrasion resistant than neoprene, super stretch for greater flexibility



3

## TRANSPIRE FLEECE

Transpire fleece fabric has an incredibly comfortable, tight brush fleece on the inside and a smooth, slip knit on the outside. The yarns are coated with a durable, wicking chemical, making the fleeces very fast drying. They are treated with 'Scotchgard™' to keep you fresher for longer. Warm when wet or dry. The fleeces should be worn in contact with the skin at all points to maximise the fabric's good sweat wicking properties.

4

## PERTEX QUANTUM

Pertex Quantum is the lightest Pertex ever. Quantum has been engineered to be one hundred percent windproof, showerproof and still allow moisture to pass freely from the inside, keeping the wearer dry. As a fabric, it is super lightweight, durable, insulating and feels as soft as silk.

## A FEW WORDS ABOUT PRODUCTION

We make all of our fabrics here in the UK, which in turn creates UK jobs. Fabric production at home means that our manufacturing activity is a little kinder to the environment.

All machinery used in our production is sourced either here in the UK or in Europe. This works well for us as it means that we can react readily to the needs of our customers, which is to have all of the standard items that we make available in stock all of the time.



WEAR ALONE OR AS AN OUTER LAYER

**OUTER LAYER:**  
**AQUATHERM**  
**LONG SLEEVE DRY CAG**

WEAR ALONE OR AS A MID LAYER

**MID LAYER:**  
**AQUATHERM**  
**SHORT SLEEVE TOP**

WEAR ALONE OR AS A BASE LAYER

**BASE LAYER:**  
**TRANSPIRE FLEECE**  
**LONG SLEEVE TOP**

**Our unique technical fabrics are designed to be worn alone or, for best results in extreme conditions, as part of a thermal layering system.**

The illustrations show our multi-purpose watersports separates in cross-section. If it's a warm or chilly day on the water, you can 'layer-up' or 'layer-down' accordingly.

Check out the layering system colour coding next to each item in the brochure to get the best use and value from your kit.



WEAR ALONE OR AS AN OUTER LAYER

**OUTER LAYER:**  
**AQUATHERM**  
**DRY TROUSERS**

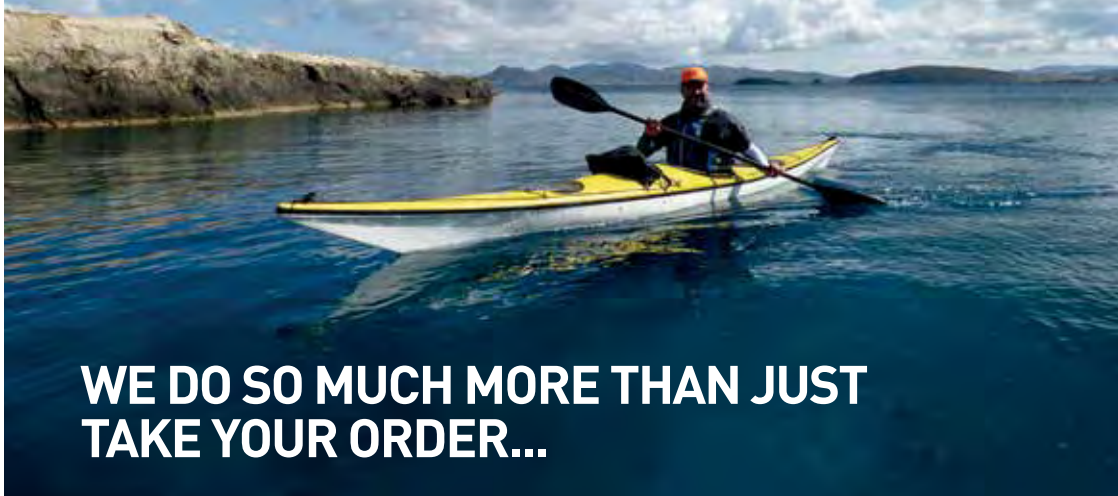
WEAR ALONE OR AS A MID LAYER

**MID LAYER:**  
**AQUATHERM**  
**LONG TROUSERS**

WEAR ALONE OR AS A BASE LAYER

**BASE LAYER:**  
**TRANSPIRE FLEECE**  
**LONG TROUSERS**

|   |    |
|---|----|
| Aquatherm cags                                | 07 |
| Dry cags                                      | 08 |
| Coverall cag deck                             | 09 |
| Dry trousers                                  | 09 |
| Aquatherm clothing                            | 10 |
| Aquatherm fleece clothing                     | 13 |
| Neoprene spray decks                          | 14 |
| Aquatherm spray decks and hatches             | 15 |
| Top decks and sizing your deck                | 16 |
| Transpire fleece clothing                     | 20 |
| Tuiliqs, Greenland gear                       | 22 |
| Paddlesuits                                   | 24 |
| Pertex clothing, swimwear                     | 26 |
| Kids clothing                                 | 27 |
| Heads, hands and feet                         | 28 |
| Buoyancy, helmets and boots                   | 30 |
| Accessories                                   | 31 |
| Kayaks and paddles                            | 32 |
| Kealeazy, Heealeazy, Skid Plate and Ding Dots | 34 |
| Size Charts                                   | 35 |
| Made to measure and measuring tips            | 38 |
| Terms and conditions                          | 39 |
| Order form                                    | 40 |



**WE DO SO MUCH MORE THAN JUST TAKE YOUR ORDER...**



## ...WE TRY AND GIVE YOU WHAT YOU WANT

Here at Reed we know that specialist kit can be a big investment. We don't overpromise on the features and benefits of our products. We know our products well and before they go into production they are tried and tested on top athletes and world class explorers. If by chance your purchase turns out not to be what you had hoped for then we will do our best to put this right for you. We have thousands of returning, satisfied customers to date who have that confidence in us.

A favourite part of the work we do is in research and development. You (our customers) and your needs are at the centre of that plan. We draw on many years of technical expertise and experience in fabrics and garment construction and can now offer a large size range of clothing with an unmatched, optional made to measure service, all to ensure the best fit for you.

Our staff are trained to help you get the best kit you need for purpose and will make every effort to get it delivered to you on time for your holiday or event.

# AQUATHERM TOURING CAG

**SIZES** SEE GUIDES ON PAGE 35

**OVERVIEW:** A soft and comfortable cag that can be worn next to the skin or over thermals in the cold. This cag makes use of our unique front baffle neck seal, which, with its wider neck gape when undone, allows for maximum ventilation on prolonged journeys.



**BEST SELLER**

UNISEX  
WEAR ALONE OR AS AN  
OUTER LAYER

**AQUATHERM TOURING CAG SHORT SLEEVE**

**USES:** Summer paddling.

**COLOURS**

**CODE: TCSS**      **£100.00**



Detachable, popped, adjustable hood

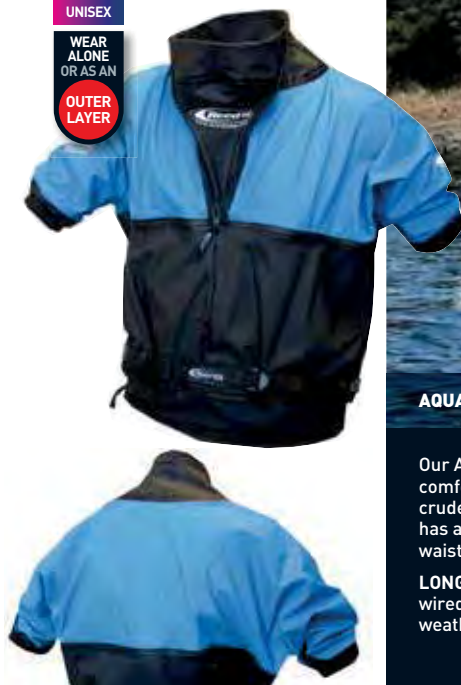
**AQUATHERM TOURING CAG LONG SLEEVE**

**USES:** All year round paddling.

**COLOURS**

**CODE: TC**      **£165.00**

UNISEX  
WEAR ALONE OR AS AN  
OUTER LAYER



**AQUATHERM TOURING CAGS SHORT SLEEVE AND LONG SLEEVE**

Our Aquatherm stretch dry seals on the cuff and neck offer a more comfortable fit over a broader area of your wrist and neck, without the cruder pressure associated with traditional latex seals. The cag body has an adjustable twin waist seal fixing securely over your deck and waist tube. These cags come with reflective (3M) strips for added safety.

**LONG SLEEVE TOURING CAG ONLY:** There is a snap on/off hood with wired brim with adjustable straps at the sides to get a snug fit when the weather closes in.

# DRY CAGS



**SIZES** SEE GUIDES ON PAGE 35

Our most popular cag with the lightest thermal technical outer layer for all season paddling, offering unrestricted freedom of movement. Enough volume to get extra thermal layers (Reed Transpire Fleece) underneath for colder conditions. Split resistant, comfortable, non latex wrist seals. Adjustable neck seal that is particularly beneficial for venting and for younger paddlers or smaller sized people who can often struggle to get in and out of a cag.

**USES:** White water, down river, marathon, surf kayaking, open canoeing, sea kayaking and recreational paddling.



UNISEX  
WEAR ALONE OR AS AN OUTER LAYER

**BEST SELLER**

### AQUATHERM LONG SLEEVE DRY CAG

**USES:** All year round paddling.

**COLOURS**

**CODE: DCLS** £145.00

### AQUATHERM SHORT SLEEVE DRY CAG

**USES:** Summer paddling.

**COLOURS**

**CODE: DCSS** £95.00

**NECK SYSTEM:** Great for venting or for smaller sized paddlers who struggle to get in and out of a cag.



Adjustable neck - open



Adjustable neck - closed

Our Aquatherm Fleece Dry Cags offer a greater thermal capacity and excels when used continuously in colder environments. The extra 4mm soft, warm, inner fleece gives a superb low bulk to high warmth ratio for the chilliest conditions.



UNISEX  
WEAR ALONE OR AS AN OUTER LAYER

**COMBINATION TOP DECKS SEE PAGE 16**

### AQUATHERM FLEECE LONG SLEEVE DRY CAG

**USES:** Extra warmth for colder paddling.

**COLOURS** ink blue

**CODE: ADCLS** £165.00

### AQUATHERM NATURAL LONG SLEEVE DRY CAG

**USES:** All year round paddling.

**COLOURS** natural

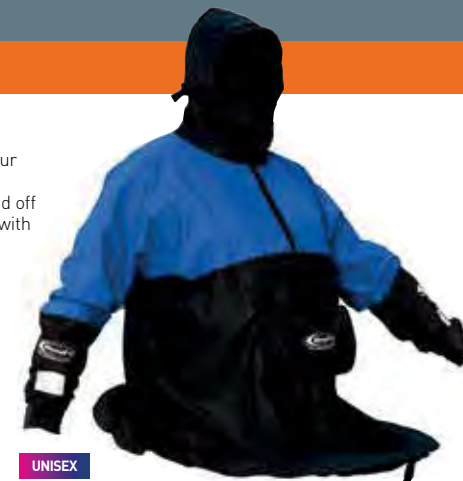
**CODE: NDCLS** £145.00

# COVERALL CAG DECK

**SIZES** SEE GUIDES ON PAGE 35



Worn over the top of everything including your buoyancy aid! Superb waterproof cover on and off the water and popular with expedition paddlers. Integral hood with wire peak, with volume adjuster straps for a snug fit. Reflective 3M patches on cuff for added safety. Large front pocket with velcro flap cover and drainage holes. Detachable hand warmer for use when off the water. Long bodied hem providing a good spray cover for all decks, incorporating a 6mm high-tension shock cord and grab loop. One size only



UNISEX  
WEAR ALONE OR AS AN OUTER LAYER

### AQUATHERM COVERALL CAG DECK AND WARMER

**USES:** All year round paddling.

**COLOURS**

**CODE: CCDW** £140.00

# DRY TROUSERS

High waist paddle trousers. Double fabric layers on seat and knee. Elasticated adjustable shoulder straps. Adjustable ankle seals or built-in Aquatherm socks to keep the wet out. Designed for use with Aquatherm and Transpire fleece garments worn underneath as part of a layering system.

UNISEX  
WEAR ALONE OR AS AN OUTER LAYER

**BEST SELLER**



Braces fastening loops

Dry Trousers ankle seal

Dry Trousers with added socks

### AQUATHERM DRY TROUSERS

**USES:** All year round paddling.

**COLOURS**

**DRY TROUSERS**  
**CODE: DRT** £85.00

**DRY TROUSERS + ZIP**  
**CODE: DRT+Z** £108.00

**DRY TROUSER + SOCKS**  
**CODE: DRT+S** £92.00

**DRY TROUSER + ZIP + SOCKS**  
**CODE: DRT+Z+S** £118.00

# AQUATHERM TOPS

**SIZES** SEE GUIDES ON PAGE 36

## AQUATHERM AND AQUATHERM FLEECE SEPARATES

All-purpose watersports separates, designed to be worn singularly or combined to form versatile two piece wetsuits.



| AQUATHERM MENS LONG SLEEVE TOP |        |
|--------------------------------|--------|
| <b>USES:</b> All watersports.  |        |
| <b>COLOURS</b>                 |        |
| <b>LONG SLEEVE TOP</b>         |        |
| CODE: <b>LST</b>               | £60.00 |
| <b>WITH 30cm FRONT ZIP</b>     |        |
| CODE: <b>LST-FZ</b>            | £64.00 |
| <b>WITH 50cm BACK ZIP</b>      |        |
| CODE: <b>LST-BZ</b>            | £64.00 |



**ZIP OPTIONS FOR MENS AND WOMENS AQUATHERM TOPS**  
50cm back zip or 30cm front zip options.



|   |  |   |
|---|--|---|
| <b>WEAR ALONE AS A</b><br><b>BASE LAYER</b> | <b>WEAR ALONE AS A</b><br><b>MID LAYER</b> | <b>WEAR ALONE AS AN</b><br><b>OUTER LAYER</b> |
|---|--|---|

**ADDED VALUE**  
all our Aquatherm products can be worn as a base, mid or outer layer.

## AQUATHERM UNISEX SHORT JOHN

**USES:** A popular choice with snorkellers and for indoor pool instructors. Zipless garment.

**COLOURS**   
CODE: **SJ** £90.00



**UNISEX**  
**WEAR ALONE AS AN**  
**OUTER LAYER**



**BEST SELLER**

**MENS**  
**WEAR ALONE AS AN**  
**OUTER LAYER**



| AQUATHERM VEST                |        |
|-------------------------------|--------|
| <b>USES:</b> All watersports. |        |
| <b>COLOURS</b>                |        |
| <b>VEST</b>                   |        |
| CODE: <b>V</b>                | £30.00 |
| <b>WITH 30cm FRONT ZIP</b>    |        |
| CODE: <b>V-FZ</b>             | £34.00 |
| <b>WITH 50cm BACK ZIP</b>     |        |
| CODE: <b>V-BZ</b>             | £34.00 |



**WOMENS**  
**WEAR ALONE AS AN**  
**OUTER LAYER**



| AQUATHERM WOMENS LONG SLEEVE TOP |        |
|----------------------------------|--------|
| <b>USES:</b> All watersports.    |        |
| <b>COLOURS</b>                   |        |
| <b>LONG SLEEVE TOP</b>           |        |
| CODE: <b>WLST</b>                | £60.00 |
| <b>WITH 30cm FRONT ZIP</b>       |        |
| CODE: <b>WLST-FZ</b>             | £64.00 |
| <b>WITH 50cm BACK ZIP</b>        |        |
| CODE: <b>WLST-BZ</b>             | £64.00 |

| AQUATHERM WOMENS SHORT SLEEVE TOP |        |
|-----------------------------------|--------|
| <b>USES:</b> All watersports.     |        |
| <b>COLOURS</b>                    |        |
| <b>SHORT SLEEVE TOP</b>           |        |
| CODE: <b>WT</b>                   | £46.00 |
| <b>WITH 30cm FRONT ZIP</b>        |        |
| CODE: <b>WT-FZ</b>                | £50.00 |
| <b>WITH 50cm BACK ZIP</b>         |        |
| CODE: <b>WT-BZ</b>                | £50.00 |

## AQUATHERM WOMENS VEST

**USES:** All watersports.

**COLOURS**   
**WOMENS VEST**  
CODE: **WV** £30.00  
**WITH 30cm FRONT ZIP**  
CODE: **WV-FZ** £34.00  
**WITH 50cm BACK ZIP**  
CODE: **WV-BZ** £34.00



# AQUATHERM AND AQUATHERM FLEECE SHORTS AND TROUSERS

**SIZES** SEE GUIDES ON PAGE 36



**BEST SELLER**



## AQUATHERM PRE-BENT LONG TROUSERS

**USES:** All year round use.

**COLOURS**

**CODE: PBLT** £58.00

## AQUATHERM PRE-BENT 3/4 TROUSERS

**USES:** All year round use.

**COLOURS**

**CODE: PBTQT** £48.00

## AQUATHERM STANDARD LONG TROUSERS

**USES:** All watersports.

**COLOURS**

**CODE: LT** £52.00



**BEST SELLER**

## AQUATHERM PRE-BENT SHORTS

**USES:** All year round use.

**COLOURS**

**CODE: PBS** £38.00



## AQUATHERM STANDARD SHORTS

**USES:** All watersports.

**COLOURS**

**CODE: S** £32.00



**UNISEX**  
**WEAR ALONE AS AN OUTER LAYER**

## STANDARD OR PRE-BENT SHAPE FIT?

Our standard styles are all-purpose watersports pants, ideal for pool training, snorkelling or swimming.

Our pre-bent styles fit best when sat or kneeling. Great for paddling with maximum stretch direction across the front and up the back panels.

Both of these Unisex styles are designed to be worn as a snug fit. They are comfortably worn next to the skin or layered over transpire fleece shorts or lycra trunks. All of our shorts and trousers are high backed and designed to overlap well with our Reed tops.



## AQUATHERM FLEECE STORM TROUSERS

**USES:** High-waisted. Adjustable shoulder straps. Leg pockets. Chest hand-warmer/pocket. Internal phone pocket.

**COLOURS**

**CODE: ST-0** £130.00



## AQUATHERM FLEECE PRE-BENT SHORTS

**USES:** Extra warm for all year round use in colder conditions.

**COLOURS**

**CODE: APBS** £45.00



## AQUATHERM FLEECE PRE-BENT 3/4 LENGTH TROUSERS

**USES:** Extra warm for all year round use in colder conditions.

**COLOURS**

**CODE: APBTQT** £55.00



## AQUATHERM FLEECE PRE-BENT LONG TROUSERS

**USES:** Extra warm for all year round use in colder conditions.

**COLOURS**

**CODE: APBLT** £65.00

**AQUATHERM FLEECE** - The extra 4mm soft, warm, inner fleece on these garments gives them a superb low bulk to high warmth ratio for the chilliest conditions.

**UNISEX**  
**WEAR ALONE OR AS A MID LAYER**

# AQUATHERM FLEECE JACKET & TOPS



**UNISEX**  
**WEAR ALONE AS AN OUTER LAYER**

**POPULAR WITH FISHERMEN**

## AQUATHERM FLEECE STORM JACKET

**USES:** Outdoor jacket for extreme conditions. Easy on/off. Comes with hand warmer slits and large front pocket.

**COLOURS**

**SIZES** S/M 40"/102cm  
L/XL 50"/127cm  
XXL 55"/140cm

**CODE: SJ-0** £140.00



**MENS**  
**WEAR ALONE OR AS A MID LAYER**

## AQUATHERM FLEECE MENS LONG SLEEVE TOP

**USES:** Extra warm for all year round use in colder conditions.

**COLOURS**

**MENS LONG SLEEVE TOP**  
**CODE: ALST** £70.00

**WITH FRONT ZIP**  
**CODE: ALST-FZ** £74.00

**WITH BACK ZIP**  
**CODE: ALST-BZ** £74.00



**WOMENS**  
**WEAR ALONE OR AS A MID LAYER**

## AQUATHERM FLEECE WOMENS LONG SLEEVE TOP

**USES:** Extra warm for all year round use in colder conditions.

**COLOURS**

**WOMENS LONG SLEEVE TOP**  
**CODE: AWLST** £70.00

**WITH FRONT ZIP**  
**CODE: AWLST-FZ** £74.00

**WITH BACK ZIP**  
**CODE: AWLST-BZ** £74.00

# NEOPRENE SPRAY DECKS

**SIZES** SEE GUIDES ON PAGE 35 ONWARDS



## OUR DECKS – NEOPRENE AND AQUATHERM

### NEOPRENE SPRAY DECKS

Manufactured in Britain using the highest quality 4mm neoprene (Chloroprene rubber). 9.5mm high tension shock cords on white water decks, 8mm high tension shock cords on sea, K1 and Super Tour decks for maximum grip. Glued seams, double blind stitched and taped internally. Sticky latex reinforced top and bottom edges. Specify your boat and model with cockpit length and width to ensure we supply you with the correct deck.

### AQUATHERM SPRAY DECKS

20 times more abrasion resistant than Neoprene, these 360 degree stretch decks are a popular choice for competition disciplines. All seams are stitched and taped for durability and watertightness. They are UV stable, waterproof, very lightweight and fast drying. All decks have a double 6mm high tension shock cord. Options include a fixed or an adjustable waistband, optional bale hole and maploops.

**\* USES FOR AQUATHERM SPRAY DECKS:** Sea kayaking, touring, expedition and recreational use as well as for slalom, polo, surf, sprint, marathon and river racing.

**COLOURS:** ■ ALL SPRAY DECKS AVAILABLE IN BLACK ONLY.



### NEOPRENE K1 DECK

Deck with latex top.

**USES:** Low volume sea kayaks, K1, Polo, Slalom.

**CODE:** NSDK1 £65.00

# AQUATHERM SPRAY DECKS



Illustrated with optional bale hole and map loops.

### AQUATHERM SPRAY DECK AND BRACES

Fixed waist.

**USES:** \* see opposite.

**CODE:** SD+B £62.00



### AQUATHERM SPRAY DECK WITH FIXED BODY TUBE

Fixed waist.

**USES:** \* see opposite.

**CODE:** SD £60.00



### AQUATHERM SPRAY DECK WITH ADJUSTABLE BODY TUBE

Adjustable waist.

**USES:** \* see opposite.

**CODE:** SD+A £61.00



### AQUATHERM SPRINT/MARATHON DECK

The **Sprint / Marathon** deck is extremely dry, flexible and comfortable. Allows for maximum trunk rotation. With enough room for comfortable knee flexing. Adjustable 6mm shock cord.

The **Marathon Deck** version has a large gauge, nylon, corrosion proof zip and slider for fast portages.

**USES:** Marathon and sprint kayaks.

**CODES:**

**SD-A-MA** £59.00

**WITH ZIP**  
**SD-A-MA-Z** £69.00

### OPTIONAL EXTRAS FOR AQUATHERM DECKS

**BALE HOLES** – add £9. Enables easy access inside cockpit without taking off your spray deck. Roll down and clip shut, forming a water tight seal.  
**CODE:** Add BH to code. Example: SD+A+BH.

**MAP LOOPS** – add £5. Attach map case to loops for secure fixing even in the most trying conditions. **CODE:** Add ML to code. Example: SD+B+BH+ML.

# AQUATHERM COCKPIT COVERS, HATCH COVERS AND SEA SOCKS



### NEOPRENE P3 & P4 WHITewater DECK

Deck and dry lip.

**USES:** Keyhole P3 & P4 playboating decks.

**CODE:** NSDP3 £75.00

**CODE:** NSDP4 £75.00



### NEOPRENE SUPER TOUR SPRAY DECK

Deck with latex top – 50" adjustable waist only.

**USES:** Large plastic cruising boat decks.

**CODE:** NSDT £70.00



### NEOPRENE SEA DECK

Deck with latex under and map loops.

**USES:** Keyhole sea kayaks.

**CODE:** NSDSD £70.00



### NEOPRENE SURF DECK

Deck and latex under.

**USES:** Mega/Ride cockpit style surf kayaks.

**CODE:** NSDSF £75.00



### AQUATHERM ROUND HATCH COVERS

8 and 10 inch.

**CODE:** HC8 £17.00

**CODE:** HC10 £17.00

### AQUATHERM OVAL HATCH COVERS

16 and 17 inch.

**CODE:** HC16 £21.00

**CODE:** HC17 £21.00



### AQUATHERM COCKPIT COVER

Made to measure and standard sizes.

**CODE:** CC £29.00



### AQUATHERM SEA SOCK

Made to measure. Inserted into your cockpit, adds water-proofing and insulation for cold water paddling. Ideal for skin on frame kayaks.

**CODE:** SEASOCK £75.00



# TOP DECKS MADE TO ORDER



**SPECIFY YOUR PERFECT COMBINATION**  
All of our cags and tops shown on pages 7, 8, 10 and 11 can be attached to any of our neoprene and aquatherm deck shapes shown on pages 14 and 15.

**FOR SOME PERFECT COMBINATIONS  
SEE PAGES 18 & 19**



# SPRAY DECK – SIZE CHART EXAMPLES

## SPRAY DECK COCKPIT TYPE

| TYPE & EXAMPLES   | SHAPE | LENGTH<br>● min<br>● max | WIDTH<br>● min<br>● max | AQUATHERM    | NEOPRENE |
|---|-------|--------------------------|-------------------------|--------------|----------|
|   |       |                          |                         | AVAILABILITY |          |
| Ocean A: Nordcapp, Skim, Kirton                           |       | ● 55cm<br>● 59cm         | ● 47cm<br>● 50cm        | YES          | NO       |
| Ocean B: Pintail, Anas Acuta                              |       | ● 58cm<br>● 66cm         | ● 42cm<br>● 48cm        | YES          | NO       |
| Low Volume: K1, Polo, Slalom, Surf                        |       | ● 70cm<br>● 80cm         | ● 42cm<br>● 47cm        | YES          | YES      |
| Keyhole A: Valley, P&H, Composite                         |       | ● 79cm<br>● 85cm         | ● 45cm<br>● 50cm        | YES          | YES      |
| Keyhole Plastic: Valley, P&H, NDK Plastic                 |       | ● 79cm<br>● 85cm         | ● 48cm<br>● 53cm        | YES          | YES      |
| Keyhole B: NDK Explorer, Rockpool, Northshore, Composite  |       | ● 83cm<br>● 89cm         | ● 42cm<br>● 47cm        | YES          | YES      |
| Keyhole C: Prijon Seayak, Current Designs, Modern Plastic |       | ● 86cm<br>● 93cm         | ● 50cm<br>● 55cm        | YES          | YES      |
| Big Touring: Venture, Plastic                             |       | ● 89cm<br>● 99cm         | ● 50cm<br>● 60cm        | YES          | YES      |

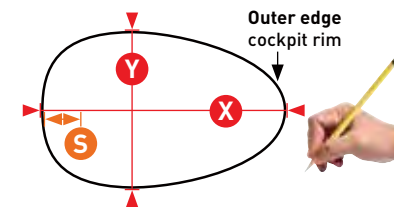
## MEASURING AND ORDERING

We offer eight 'stock' cockpit shapes, as illustrated in the table opposite, which enable our decks to fit virtually any boat in today's market. **Some decks may not be in stock. If you need your kit quickly then please enquire for availability.**

To ensure a successful purchase please use the checklist below and submit with your order:

- Your boat:** Make and model
- Cockpit style and shape:** See table left
- Cockpit material:** Fibre glass, plastic, other
- Length of your cockpit** **X**  
See picture below
- Width of your cockpit** **Y**  
See picture below
- Your body tube selection:**  
Fixed tube – S, M, L, XL, XXL  
Or adjustable tube – S/M, L/XL, XXL
- Any additional features:**  
e.g. bale hole, map rings
- Any special features:**  
Aquatherm vest, competition top styles, \* **Non standard seat position**

Where to measure length, width and seat position.



**S** \* The standard seat position for our body tube is 10cm in from the back edge of the cockpit.

### FIXED BODY TUBE SIZE – NEOPRENE AND AQUATHERM

| SIZE   | S  | M  | L  | XL | XXL |
|--------|----|----|----|----|-----|
| INCHES | 28 | 31 | 34 | 37 | 40  |
| CM     | 72 | 79 | 86 | 93 | 102 |

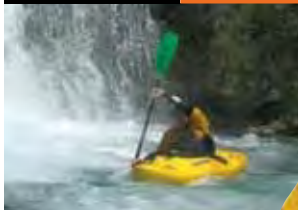
### ADJUSTABLE BODY TUBE SIZE – AQUATHERM

| SIZE   | S/M | L/XL | XXL |
|--------|-----|------|-----|
| INCHES | 36  | 42   | 50  |
| CM     | 91  | 107  | 127 |

# EXAMPLES: AQUATHERM TOP DECKS

SIZES SEE GUIDES ON PAGE 35 ONWARDS

UNISEX



Inc bale hole and map loops code TC-SDBM. Price £215.00

**TOURING CAG AND AQUATHERM DECK**  
**USES:** Sea kayaking, touring, all year round.  
**COLOURS**   
**CODE: TC-SD £195.00**

Inc map loops code TC-NSDM. Price £220.00



**TOURING CAG AND NEOPRENE DECK**  
**USES:** Sea kayaking, touring, all year round.  
**COLOURS**   
**CODE: TC-NSD £213.00**

All our tops can be added to any of our decks. The product examples that follow give you a clearer idea of possible Top Deck combinations with examples of the disciplines they are commonly used for.



**LONG SLEEVE DRY CAG WITH NEOPRENE DECK**  
**USES:** Whitewater, rodeo, surf, river running, all year round.  
**COLOURS**   
**CODE: CDLS £170.00**



**SHORT SLEEVE DRY CAG WITH NEOPRENE DECK**  
**USES:** Whitewater, rodeo, surf, river running, summer use.  
**COLOURS**   
**CODE: CDSS £155.00**



**LONG SLEEVE DRY CAG WITH AQUATHERM DECK**  
**USES:** Sea kayaking, river running, all year round use.  
**COLOURS**   
**CODE: SD-DCLS £160.00**



**SHORT SLEEVE DRY CAG WITH AQUATHERM DECK**  
**USES:** Sea kayaking, river running, summer use.  
**COLOURS**   
**CODE: SD-DCSS £145.00**



**COMPETITION LONG SLEEVE TOP AND NEOPRENE DECK**  
**USES:** Slalom, polo, surf, sprint, marathon.  
**COLOURS**   
**CODE: NSD-CLST £160.00**



**COMPETITION SHORT SLEEVE TOP AND NEOPRENE DECK**  
**USES:** Slalom, polo, surf, sprint, marathon.  
**COLOURS**   
**CODE: NSD-CMT £150.00**



**COMPETITION LONG SLEEVE TOP AND AQUATHERM DECK**  
**USES:** Slalom, polo, surf, sprint, marathon.  
**COLOURS**   
**CODE: SD-CLST £145.00**



**COMPETITION SHORT SLEEVE TOP AND AQUATHERM DECK**  
**USES:** Slalom, polo, surf, sprint, marathon.  
**COLOURS**   
**CODE: SD-CMT £130.00**

# EXAMPLES: AQUATHERM VEST DECKS

SIZES SEE GUIDES ON PAGE 35 ONWARDS

MENS

WOMENS



**AQUATHERM VEST AND AQUATHERM DECK**  
**USES:** Low volume sea kayaks, slalom, polo, all kayaking particularly competition disciplines.  
**COLOURS**   
**CODE: SD-V £90.00**



**AQUATHERM VEST AND NEOPRENE DECK**  
**USES:** Low volume sea kayaks, slalom, polo, all kayaking particularly competition disciplines.  
**COLOURS**   
**CODE: NSDK1-V £97.00**



**AQUATHERM VEST AND AQUATHERM DECK**  
**USES:** Low volume sea kayaks, slalom, polo, all kayaking particularly competition disciplines.  
**COLOURS**   
**CODE: SD-WV £90.00**



**AQUATHERM VEST AND NEOPRENE DECK**  
**USES:** Low volume sea kayaks, slalom, polo, all kayaking particularly competition disciplines.  
**COLOURS**   
**CODE: NSDK1-WV £97.00**

# EXAMPLES: AQUATHERM FLEECE TOP DECKS



**AQUATHERM FLEECE LONG SLEEVE DRY CAG WITH NEOPRENE DECK**  
**USES:** Colder water, whitewater, rodeo, surf, river running.  
**COLOURS**   
**CODE: ADCLS-NSD £185.00**

UNISEX



**AQUATHERM FLEECE LONG SLEEVE DRY CAG WITH AQUATHERM DECK**  
**USES:** Colder water, Sea kayaking, river running.  
**COLOURS**   
**CODE: ADCLS-SD £170.00**



**AQUATHERM FLEECE LONG SLEEVE COMPETITION TOP AND NEOPRENE DECK**  
**USES:** Colder water, slalom, polo, surf, competition.  
**COLOURS**   
**CODE: ACLST-NSD £175.00**



**AQUATHERM FLEECE SHORT SLEEVE COMPETITION TOP AND NEOPRENE DECK**  
**USES:** Colder water, slalom, polo, surf, competition.  
**COLOURS**   
**CODE: ACMT-NSD £160.00**



**AQUATHERM FLEECE LONG SLEEVE COMPETITION TOP AND AQUATHERM DECK**  
**USES:** Colder water, down river, slalom, polo, surf, competition.  
**COLOURS**   
**CODE: ACLST-SD £165.00**



**AQUATHERM FLEECE SHORT SLEEVE COMPETITION TOP AND NEOPRENE DECK**  
**USES:** Colder water, slalom, polo, surf, competition.  
**COLOURS**   
**CODE: ACMT-SD £150.00**

# TRANSPIRE FLEECE

**SIZES** SEE GUIDES ON PAGE 36 AND 37

These Reed base layers are the first thing you can put on when dressing for sport. They will keep you warm when you are cold and keep you dry should you get too warm. They are even known to keep you warm when you get wet! The yarns are coated with a durable wicking chemical, making them very fast drying. All garments are Scotchgarded to keep you smelling fresher for longer! For the best performance, Transpire Fleece should be worn in contact with the skin at all points to maximise the fabric's great sweat wicking properties. Front zip version also available.



UNISEX

WEAR ALONE OR AS A

BASE LAYER

Used by recreational sports people and sports professionals for running, rock climbing, skiing, snowboarding, mountain biking, cycling, golf, diving, sailing, horse riding, motorcycling, rugby, soccer training, hockey, netball... the list goes on.



## TRANSPIRE FLEECE FULL SUIT

**USES:** All year round land/sea sports and leisure. These are popular with divers. An all in one suit for people who don't want a cross-over of garments at the waist.

**COLOURS** ■

**CODE:** TFOP **£70.00**



UNISEX

WEAR ALONE OR AS A

BASE LAYER

The fleecy lining is super snug but thin and lightweight enough to wear comfortably under sports kit. As it washes and dries quickly it is easily ready for your next training session. These garments will out-perform all others, even in extreme climates, on expedition, in sport or for leisure.



"What's good? For my 100-mile daily commute I always pick the Transpire fleece set over all the other thermals I've tested.... They are the ideal companion for any winter rider."

Andy Davidson  
Motorcycle News Review



Zip option available on long and short sleeve tops.

## TRANSPIRE FLEECE LONG SLEEVE TOP

**USES:** All year round land/sea sports and leisure.

**COLOURS** ■

**LONG SLEEVE TOP**  
**CODE:** FT **£35.00**

**LONG SLEEVE TOP + ZIP**  
**CODE:** FT-FZ **£39.00**



**BEST SELLER**



## TRANSPIRE FLEECE SHORT SLEEVE TOP

**USES:** All year round land/sea sports and leisure.

**COLOURS** ■

**SHORT SLEEVE TOP**  
**CODE:** FTS **£34.00**

**SHORT SLEEVE TOP + ZIP**  
**CODE:** FTS-FZ **£38.00**



## TRANSPIRE FLEECE LONG TROUSERS

**USES:** All year round land/sea sports and leisure.

**COLOURS** ■

**CODE:** FLT **£41.00**

## TRANSPIRE FLEECE SHORT SHORTS

**USES:** All year round land/sea sports and leisure.

**COLOURS** ■

**CODE:** FSH **£26.00**



# DOUBLE LAYER TRANSPIRE FLEECE

## DOUBLE LAYER TRANSPIRE FLEECE LONG TROUSERS

**USES:** Extra warmth for extreme cold land/sea sports.

**COLOURS** ■

**CODE:** FLTD **£61.50**

UNISEX

WEAR ALONE OR AS A

BASE LAYER



## DOUBLE LAYER TRANSPIRE FLEECE SOCKS

**USES:** Extra warmth for extreme cold land/sea sports.

**COLOURS** ■

**CODE:** FSD **£12.90**



## DOUBLE LAYER TRANSPIRE FLEECE LONG SLEEVE TOP

**USES:** Extra warmth for extreme cold land/sea sports.

**COLOURS** ■

**CODE:** FTD **£52.50**



# AQUATHERM GREENLAND STYLE TUILIQS

CAN BE MADE TO MEASURE. SEE PAGE 38/39

**SIZES** SEE GUIDES ON PAGE 35 ONWARDS

## AQUATHERM KEYHOLE COCKPIT TUILIQ

**USES:** All year round paddling for keyhole cockpit kayaks.

**COLOURS**

**CODE: TQ-D** £200.00

## AQUATHERM UNIVERSAL DOUBLE DECK TUILIQ

**USES:** Unique double deck construction for both ocean and keyhole cockpit.

**COLOURS**

**CODE: TQ-U** £235.00



UNISEX  
WEAR ALONE OR AS AN  
OUTER LAYER

## AQUATHERM OCEAN STYLE TUILIQ

**USES:** Ocean cockpit.

**COLOURS**

**CODE: TQ** £200.00

# TUILIQ PADDLESUITS

With separates there's always the risk of water ingress – not so with our Tuiлиq Paddlesuit. These garments combine the best features of both our Tuiлиqs and our paddlesuits. Ingenious!

## AQUATHERM GREENLAND STYLE TUILIQ PADDLESUIT

**USES:** All year round paddling paddlesuit/tuiлиq combination. Fits both ocean and keyhole cockpits.

**COLOURS**

**CODE: FPS-TQ** £390.00

## A FEW WORDS FROM THE EXPERTS...

Cheri Perry & Turner Wilson from 'Kayakways'.

"Aquatherm fabric offers an ideal combination of lightness, warmth, flexibility and strength. It dries fast and packs small, making it ideal kit on the go. We are really happy that Reed Chillcheater has adapted the smaller ocean cockpit tuiлиq to an adjustable style that will now fit a wider range of ocean cockpits and skin on frame coamings".

Take a look at these Tuiлиqs in action online at Youtube or on Cheri and Turner's instructional rolling DVD's 'This is the Roll' and 'This is the Roll 2'.



## AQUATHERM GREENLAND STYLE AQILISAQ

A contemporary version of the traditional summer kayaking spray skirt. Elasticated high waist and shoulder straps. 6mm deck shock cord. Grab loop.

**COLOURS**

**CODE: SD+G** £72.00

## AQUATHERM GREENLAND STYLE GAUNTLETS

For full hand and arm protection in very cold conditions. Roomy for fleece layers underneath with grouped fingers for added warmth. Shock cord fastening at bicep.

**COLOURS**

**CODE: GG** £52.00

# AQUATHERM FLEECE TUILIQS

## AQUATHERM FLEECE GREENLAND STYLE TUILIQ

**USES:** Very cold conditions. Fits keyhole cockpit.

**COLOURS**

**CODE: ATQ** £215.00

## AQUATHERM FLEECE UNIVERSAL DOUBLE DECK TUILIQ

**USES:** Very cold conditions. Fits ocean and keyhole cockpits.

**COLOURS**

**CODE: ATQ-U** £250.00

## AQUATHERM FLEECE OCEAN STYLE TUILIQ

**USES:** Very cold conditions. Fits ocean cockpit.

**COLOURS**

**CODE: ATQ-T** £215.00

UNISEX  
WEAR ALONE OR AS AN  
OUTER LAYER



## AQUATHERM FLEECE GREENLAND STYLE TUILIQ PADDLESUIT

Very cold conditions.

**COLOURS**

**CODE: FPS-ATQ** £415.00



Our Tuiлиqs have three deck options:  
1 – Ocean Style cockpit  
2 – Keyhole Style cockpit  
3 – Universal Style cockpit (fits both of the above).

The Universal Style has all the features and benefits of the Ocean & Keyhole deck style Tuiлиqs.

Please note the adjustable waist, bale hole and map loop options are not available for these garments.

## GREENLAND STYLE AVATAQ ROLLING FLOAT

**USES:** Traditional style rolling float. Allows you to roll slowly whilst focusing on your body movement. Adjustable air lock. This is not a PFD.

**COLOURS**

**CODE: AVAT** £75.00

# AQUATHERM AND AQUATHERM FLEECE PADDLESUITS



**SIZES** SEE GUIDES ON PAGE 38



Our paddlesuits are made for recreational paddlers, and are ideal for paddlers who like to roll. They also work well in white water and surfing environments. They are cut to ensure maximum freedom of movement. They have been designed to allow for extra thermal layers underneath should you need to layer up (Reed transpire fleece top and pants). These suits are tough, flexible and robust (outer fabric is 20 times more abrasion resistant than neoprene). The numerous zip options outlined below give you a range of ways of getting in and out of your suit. These zips are durable and easy to use. For extra durability in high wear areas, these suits come with double layer seat and knee/shin patches. Our stretchy, comfortable built-in Aquatherm socks finish off the legs and come as standard.

**IMPORTANT:** They are not, however submersion suits. They are unsuitable for diving and not recommended for professional instructor use or for individuals working on a daily basis in more challenging environments.

## OUR PADDLESUITS AT A GLANCE

**Dry, tough, flexible & robust**  
20 times more abrasion resistant than neoprene.

**Soft, comfortable** knit surfaces next to the skin.

**Easy entry** via waterproof and flexible zips, allowing for unrestricted movement.

**All seals are non-latex,** soft and comfortable, tough, water repellent and split resistant.

**Double layer seat and knee/shin patches** for added durability in high wear areas.

**Built-in Aquatherm socks** come as standard.

**Standard sizes** or bespoke at additional cost, please enquire.

**Optional** fully adjustable, quick release double waist seal.

**Optional** fully dry and flexible relief zip - at additional cost.

**Optional** snap on/ off hood with wire peak and hood volume adjusters - at additional cost.

## AQUATHERM

## AQUATHERM FLEECE

These paddlesuits come as standard sizes. Please see measurement charts on pg 38. These images show suits with added £15.00 relief zip.



**SHOULDER ENTRY OPTION** – Easy shoulder entry via an 89cm waterproof and flexible zip, allowing for unrestricted movement across the shoulders.



**HOOD OPTION** – Popper on and off this fully waterproof hood. Comes with a malleable wire peak and volume adjuster straps for creating a snug fit if the weather closes in. Has a warm, fast drying knit on the inside. Packs up small.



**RELIEF ZIP OPTION – MEN:** Fully dry, 26cm, flexible pee zip. **WOMEN:** This same lower, 26cm front zip can work well used with a 'Shewee' style accessory (and a bit of practice!). Alternatively some ladies may prefer our 89cm long drop seat Verzip option.



**DIAGONAL FRONT ZIP OPTION** – This front entry option is available only on the paddlesuits with no outer skirt. This is a popular option with solo paddlers or paddlers who struggle with closing the zip across the shoulders..



**THE VERZIP**  
The Verzip, (short for versatile zip) is an 89cm, low profile, tough, lightweight, waterproof and flexible zip. It is located on the suit in the low chest/high back position and hinges from the front, which allows the drop seat to function spaciouly. The zip is also sited so that it sits above the back rest of your kayak for comfort.



### ADDITIONAL PRICES AND CODES FOR PADDLESUIT OPTIONS

VERZIP  
DIAGONAL FRONT ZIP  
BACK SHOULDER ZIP  
RELIEF ZIP  
HOOD

| AQUATHERM FULL PADDLE SUIT                                   | AQUATHERM FULL PADDLE SUIT AND WAIST SEAL                      | AQUATHERM FLEECE FULL PADDLE SUIT                              | AQUATHERM FLEECE FULL PADDLE SUIT AND WAIST SEAL                 |
|--|--|--|--|
| <b>USES:</b> All year paddling.                              | <b>USES:</b> All year paddling.                                | <b>USES:</b> Colder conditions.                                | <b>USES:</b> Colder conditions.                                  |
| <b>COLOURS</b>   | <b>COLOURS</b>   | <b>COLOURS</b>   | <b>COLOURS</b>   |
| <b>CODE FOR PRODUCT AS SHOWN ABOVE:</b><br>FPS-BZ-RZ £290.00 | <b>CODE FOR PRODUCT AS SHOWN ABOVE:</b><br>FPS-A-BZ-RZ £310.00 | <b>CODE FOR PRODUCT AS SHOWN ABOVE:</b><br>FPS-A-BZ-RZ £322.00 | <b>CODE FOR PRODUCT AS SHOWN ABOVE:</b><br>FPS-A-BZ-S-RZ £340.00 |
| FPS-VZ £290.00   | FPS-S-VZ £310.00   | FPS-A-VZ £322.00   | FPS-A-S-VZ £340.00   |
| FPS-FZ £290.00   | NA   | FPS-A-FZ £322.00   | NA   |
| FPS-BZ £290.00   | FPS-S-BZ £310.00   | FPS-A-BZ £322.00   | FPS-A-S-BZ £340.00   |
| Add RZ and add £15.00  | Add RZ and add £15.00  | Add RZ and add £15.00  | Add RZ and add £15.00  |
| Add H and add £17.00   | Add H and add £17.00   | Add H and add £17.00   | Add H and add £17.00   |

**MADE TO MEASURE SERVICE** – If you don't feel a standard size product will fit you comfortably a made to measure service is available at an additional cost of £50.00. Please specify submit your measurements with your mail order using the chart on pg 39 or visit our website and use the on line measurement chart.

**SIZES**

SEE GUIDES  
ON PAGE 37

# PERTEX JACKET, DRYROBES, SWIMWEAR AND GOGGLES



UNISEX  
WEAR ALONE OR AS AN  
OUTER LAYER

**PERTEX JACKET**

**USES:** Handy extra lightweight layer for land and sea sports.

**COLOURS** ■

**CODE: PQWJ** £26.00



**SMILEYS NOSE CLIP**

**USES:** Watersports. Comfortable and durable.

**CODE: NC** £8.00



Compact, super light weight jacket. Made from Pertex quantum, the lightest pertex ever. Excellent durability with a softness like silk. Shower proof and 100% windproof. Each garment packs up to the size of an apple!



**DRYROBE ADVANCE CHANGING ROBE**

**USES:** Stay warm with this thermal, dry changing robe.

**COLOURS** ■ ■

**CODE: DROBE** £95.00

UNISEX  
WEAR ALONE OR AS AN  
OUTER LAYER



**LYCRA MENS SWIMMING TRUNKS**

**USES:** Swimming.

**COLOURS** ■

**CODE: TR** £11.00

**SIZES:**

**M:** Waist 32"  
**L:** Waist 34"



**LYCRA LADIES SWIMMING TANKINI**

**USES:** Swimming.

**COLOURS** ■ ■

**CODE: WTR** £21.00

**SIZES:**

**M:** UK 12  
**L:** UK 14



**AQUASPHERE SEAL FACE MASK**

**USES:** Swimming and ideal for kayak rolling practice.

**COLOURS - SEE WEB**

**CODE: MASK** £21.00

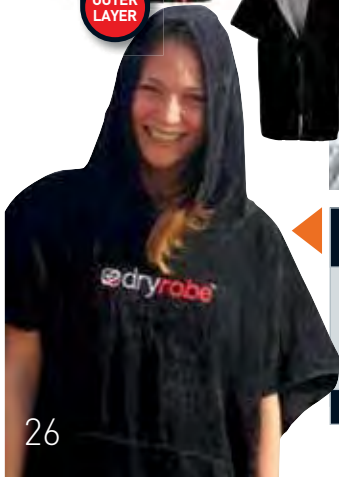


**AQUASPHERE CLEAR LENS GOGGLES**

**USES:** Swimming and ideal for kayak rolling practice.

**COLOURS - SEE WEB**

**CODE: GOGG** £11.40



**DRYROBE TOWELLING CHANGING ROBE**

**USES:** Get changed and dry in this luxurious towelling robe.

**COLOURS** ■

**CODE: DR-V** £35.00

# KIDS AQUATHERM

SIZES SEE GUIDES ON PAGE 37



**AQUATHERM KIDS CAG**

**USES:** All year round use childrens cag.

**COLOURS** ■ ■ ■

**CODE: KCAG** £112.00

**AQUATHERM KIDS LONG SLEEVE TOP**

**USES:** Kayaking, swimming, recreational watersports.

**COLOURS** ■

**CODE: KLST** £28.00



**AQUATHERM KIDS SHORT SLEEVE TOP**

**USES:** All recreational watersports.

**COLOURS** ■

**CODE: KT** £25.00

UNISEX  
WEAR ALONE OR AS AN  
OUTER LAYER



**AQUATHERM KIDS LONG TROUSERS**

**USES:** All recreational watersports.

**COLOURS** ■

**CODE: KLT** £35.00



**AQUATHERM KIDS SHORTS**

**USES:** Ideal as a warm base layer for all recreational watersports.

**COLOURS** ■

**CODE: KS** £18.30

# KIDS TRANSPIRE FLEECE

SIZES SEE GUIDES ON PAGE 36



**TRANSPIRE FLEECE KIDS LONG SLEEVE TOP**

**USES:** All outdoor sports in cold conditions.

**COLOURS** ■

**CODE: KFT** £17.50



**TRANSPIRE FLEECE KIDS SHORT SLEEVE TOP**

**USES:** All outdoor sports in cold conditions.

**COLOURS** ■

**CODE: KFTS** £17.50

UNISEX  
WEAR ALONE OR AS AN  
OUTER LAYER



**TRANSPIRE FLEECE KIDS SHORTS**

**USES:** Ideal for field sports under team kit and all outdoor sports in cold conditions.

**COLOURS** ■

**CODE: KFSH** £15.00



**TRANSPIRE FLEECE KIDS LONG TROUSERS**

**USES:** All outdoor sports in cold conditions.

**COLOURS** ■

**CODE: KFLT** £18.00

# HEAD, HANDS AND FEET

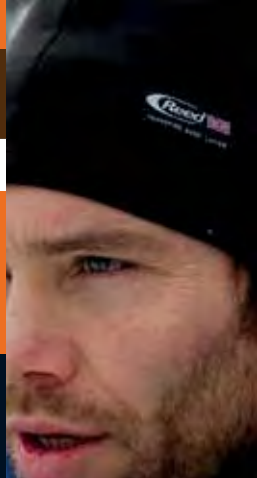
**SIZES** SEE GUIDES ON PAGE 36

This range of heat retaining light weight hoods and skull caps help beat the cold 'ice cream' headache and help prevent 'surfer's ear'. Latex free, and with full stretch, they are infinitely more comfortable than neoprene. The hoods can be easily pushed back and with their long neck tube, can be worn as a warm neck cowl. At less than 1mm thick they are ideal for use under a helmet for lower face & neck protection. (As used by the RNLI under their radio helmets).

Our Aquatherm Fleece range is for colder conditions offering extra warmth.

Our Transpire Fleece hat range is a favourite with motor cyclists, skiers and snowboarders.

To find your correct head size, measure around your head, across your eyebrows, over the tops of your ears and back again. Then check our size guide on pg 36.



## STRAP OPTION

Skull cap styles come with or without a chin strap.



## PEAK OPTION

Hoods and Skull caps are available with added optional peak to help reduce glare.



## AQUATHERM SKULL CAP

COLOUR ■

SKULL CAP  
**SK** £11.00

WITH STRAP  
**SK+S** £13.00

WITH PEAK  
**PSK** £13.00

WITH STRAP & PEAK  
**PSK+S** £15.00

CODES



## AQUATHERM HOOD

COLOUR ■

HOOD  
**H** £16.00

WITH PEAK  
**PH** £18.00

CODES



## AQUATHERM HIGH VIS SKULL CAP

COLOUR ■

SKULL CAP  
**HVSK** £11.00

STRAP  
**HVSK+S** £13.00

WITH PEAK  
**PHVSK** £15.00

WITH STRAP & PEAK  
**PHVSK+S** £17.00

CODES



## AQUATHERM HIGH VIS HOOD

COLOUR ■

HOOD  
**HVH** £16.00

WITH PEAK  
**PHVH** £18.00

CODES



## AQUATHERM FLEECE SKULL CAP

COLOUR ■

SKULL CAP  
**ASK** £18.00

WITH STRAP  
**ASK+S** £19.00

WITH PEAK  
**PASK** £19.00

WITH STRAP & PEAK  
**PASK+S** £20.00

CODES



## AQUATHERM FLEECE HOOD

COLOUR ■

HOOD  
**AH** £21.00

WITH PEAK  
**PAH** £23.00

CODES



## TRANSPIRE FLEECE BEANIE

COLOUR ■

BEANIE  
**FB** £9.00

CODES



## TRANSPIRE FLEECE HOOD

COLOUR ■

HOOD  
**FH** £16.00

CODES



## REED BASEBALL CAP

COLOUR ■ ■ ■

CAP  
**BC** £9.00

CODES

## AQUATHERM OPEN PALM WEBBED MITS

**Uses:** Palm-free webbed gloves for great paddle control whilst protecting the fingers.

COLOURS ■

CODE: **OPWM** £24.00



## AQUATHERM WEBBED PADDLE GLOVES

**Uses:** Great chill protection and flexibility. Full webbed fingers and thumb for hand paddling, rolling and resistance swimming.

COLOURS ■

CODE: **WPG** £18.00



## AQUATHERM GREENLAND GAUNTLETS

**Uses:** Full waterproof protection of the hands and arms in icy conditions. Shock cord bicep closure.

COLOURS ■

CODE: **GG** £52.00



## AQUATHERM FLEECE POGIES

**Uses:** Fleece-lined, waterproof, one-piece, fold and tuck pogie. Can be securely left in place on the paddle shaft, ready for use.

COLOURS ■

CODE: **APOG** £28.00

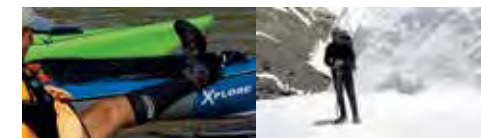


## AQUATHERM LOW PROFILE POGIE

**Uses:** Water-shedding fleece-lined, light, very low profile. Ideal for training.

COLOURS ■

CODE: **LPPOG** £28.00



## AQUATHERM SOCKS

**Uses:** Warm, dry, tough, waterproof, high ankle socks. Ideally worn under wet shoes or sandals.

COLOURS ■

CODE: **SOX** £18.00



## AQUATHERM WADING SOCKS

**Uses:** Waterproof, warm, dry, socks for open boating, kayaking, diving, mountain biking.

COLOURS ■

CODE: **WSOX** £23.00



## TRANSPIRE FLEECE SOCKS

**Uses:** Baselayer footwear to out-perform all others, whether in extreme climates, sport or leisure.

COLOURS ■

CODE: **FS** £9.00



## TRANSPIRE FLEECE DOUBLE THICKNESS SOCKS

**Uses:** Keeping you warm when it's cold and dry if you get too warm.

COLOURS ■

CODE: **FSD** £12.90

# BUOYANCY AIDS, HELMETS, BOOTS,

# ...AND SOME ACCESSORIES

## THE AQUATIC PRO BUOYANCY AID

With its cut away profile this PFD is specially designed to give a full range of movement for sea kayaking, rodeo, rafting, yachting, up to whitewater level 2 (WW II) paddling. Comes with built in Hydrapack pocket for hydration.



Front Back

### FEATURES:

- 210 denier outer shell, tear resistant PU reinforced coating
- PVC soft profiled foam – low profile
- Neoprene padded shoulders and upper back for comfort
- Front zipper opening for easy entry, non corrosive nylon
- 2 front zipper pockets
- 2 separate fleece lined handwarmer pockets
- Large rear zipper pocket for drink holder or flare, or Hydrapack top feeder
- 8 point strap adjustment system for superb fit
- 3m reflective safety piping on front, back and shoulders.



Built in hand warmers.



Buoyancy aid shown with optional 'See Me' rescue light and 'Eco Flare'.

| AQUATIC PRO BUOYANCY AID  |                        |                         |                          | USAGE   |
|---|------------------------|-------------------------|--------------------------|---|
| <b>USES:</b> All round paddling   |                        |                         |                          | Sea Kayaking <span style="color: green;">●</span> Excellent             |
| <b>COLOURS</b> <span style="color: blue;">■</span> <span style="color: yellow;">■</span> <span style="color: red;">■</span> |                        |                         |                          | Yachting <span style="color: green;">●</span> Excellent                 |
| <b>SIZE</b>   | <b>S/M</b>             | <b>L/XL</b>             | <b>XXL</b>               | Touring up to WW II <span style="color: green;">●</span> Excellent      |
| <b>CHEST</b>  | 34" - 38"<br>86 - 97cm | 39" - 43"<br>99 - 109cm | 44" - 47"<br>112 - 119cm | Rafting <span style="color: green;">●</span> Suitable                   |
| <b>WEIGHT</b>   | 30 - 60kg              | 50 - 90kg               | 80+kg                    | Rodeo <span style="color: green;">●</span> Suitable                     |
| <b>MIN (N) BUOYANCY</b>   | 50 N                   | 70 N                    | 70 N                     | Extreme white water <span style="color: black;">●</span> Not applicable |
| <b>CODE: PFD1 £91.00</b>  |                        |                         |                          |   |

## NRS CHAOS FULL CUT HELMET

**USES:** All watersports.

**COLOURS** ■ ■ ■

**CODE: 2056 £48.00**



## NRS CHAOS SIDE CUT HELMET

**USES:** All watersports.

**COLOURS** ■ ■ ■

**CODE: 2056 £48.00**



## HAVOC HALF CUT HELMET

**USES:** All round paddling.

**COLOURS** ■

**CODE: 2042 £32.00**



Visit our website for NRS helmet styles and sizes.

## BOOTS, WORK BOOTS AND WET SOCKS

**USES:** All watersports.

**COLOURS** ■

Visit our website for NRS Neoprene boots and wet shoe styles and sizes.



## REED SIMPLE DECK BAG

**COLOURS** ■ ■ ■

**CODE: DBS £29.00**



## BILGE PUMP WITH FLOAT

**COLOURS**

**CODE: BP £21.00**



## DRY SACS

**COLOUR:** Various.

**SIZE:** Four sizes available  
**CODE 2Ltr: DS2 £8.00**  
**CODE 4Ltr: DS4 £9.00**  
**CODE 8Ltr: DS8 £10.00**  
**CODE 12Ltr: DS12 £11.00**



## PRINCETON TEC ECO FLARE

**CODE: EF £16.00**



## PRINCETON TEC MERIDIAN STROBE LIGHT

**CODE: STR £24.00**



## NRS HYDROLOCK MAP CASE

**SIZE:** A4  
**CODE: MC £10.00**



## SPARE PADDLE HOLDER

**CODE: SPH £28.00**



## J CRADLE FOR VEHICLE ROOF BARS - PAIR

**CODE: JC £84.00**



## KOMBI BOAT TROLLEY

**CODE: KOMBI £90.00**



## BACK FLOAT AND PADDLE FLOAT

**CODE: BF £30.00**



## HYDRAPACK 2 LITRE

**CODE: HP2 £28.00**



## TRADE WELD - 5 MINUTE REPAIR - 28ml

Colours: Black, white and clear.

**CODE: TW £9.00**



## NRS 70 FOOT THROW BAG

**CODE: NRSTB £30.00**



**DVD's** - Please see website for full list of our DVD's.



## FABRIC REPAIR TAPE FOR ALL FABRICS

2 x 50cm lengths - one black, one grey.

**CODE: KIT 10 £5.00**



# KAYAKS



## KAYAKS FROM TOP MANUFACTURERS

We now hold a range of outstanding and award winning kayaks. Whether you are looking for fun, lightweight, folding kayaks or comfortable, high performance, day tripping boats, you can be assured of quality, good looks and excellent service with us.

Look out for our free custom made Aquatherm gear offer with every boat purchased. To see our full range of boats, paddles and accessories, go to our website.



### ORDERING KAYAKS

It's important to buy the right kayak for the right conditions. Before you commit to your purchase, call and talk to Chris for technical advice and guidance or arrange a visit and test the best kayak for you.

### KAYAK SOCK

6m long sock to cover most kayaks/skis. Made from a tough, stretchable knitted acrylic. (See our website for colours). Fast drying, easy fit. Provides protection for your kayaks and ocean racing skis against UV and road chip surface damage. Packs up tightly for storage.

### KAYAK SOCK

**USES:** Protects from UV damage during transport and storage. Dries quickly.

**COLOURS:** SEE WEBSITE

**CODE:** KC £75.00



## TRAK FOLDING KAYAK

The TRAK Seeker ST 16 is a light, portable skin-on-frame kayak that uses modern design and materials to create a rigid framed performance kayak that you can take anywhere. The 16 foot, 48 pound boat comes packed inside its own travel bag and is advertised to set up in just 10 minutes. The combination of performance and portability of the Seeker make it worth a look for kayakers of all skill levels, especially those who love to travel or simply don't have room to store a full sized sea kayak.



# PADDLES

### Eddyline Swift paddles:

Constructed using multiple layers of aircraft glass and other specialised fibers to produce a blade that is stiff, strong and very lightweight. Paddles have an oveled graphite shaft and Feather Lock Adjustable Ferrule System. They have been designed for touring, open water and surf use and with normal use should give long service.

Please see our website for our latest range of paddles, sizes and prices.



Eddyline Sea Swift paddles



Eddyline Mid Swift paddles



Eddyline Wind Swift paddles



Eddyline Swift Patterned paddles



Celtic Pro Sea paddles – available in three sizes



Epic Mid Wing – full carbon paddles – available in three sizes



Greenland Carbon Three Piece paddle

### Celtic Pro Sea paddles:

Designed for the Intermediate to Advanced paddler who wants a light strong paddle. Manufactured in the UK from straight or cranked carbon shafts with Carbon Blades. Featuring the Leverlok connecting system which enables a variable shaft length. Pro Range paddles come with a 2 year guarantee.

### EPIC Wing paddles:

The full carbon construction Epic Wing paddle range have become the preferred choice for fitness and racing paddlers and increasingly touring and expedition kayakers who want to maximize the potential of their forward stroke. Lightweight, stable, smooth and powerful, these paddles will have you paddling farther and faster. They come with standard 'Epic's Length-Lock 2™ adjustable ferrule technology'.

### Greenland Carbon Three Piece paddles:

Formed from black carbon fibre and designed to be light weight, naturally buoyant, flexible and strong to withstand any scrapes and knocks. The three pieces; two paddles and a loom, easily break down for travelling. This paddle can be simply assembled using the central loom piece with its secure 'Paddlok system' centre joint. It can also be made into a shorter Storm Paddle by attaching the blades together without the central loom.

**ORDERING PADDLES:** To get the right paddle, please give us a call and let us know your height and arm length, your ability – beginner, intermediate or advanced. Where you are mostly going to paddle? River, estuary, sea lake etc. Have you had any injuries?



# KEELEAZY, HEELEAZY AND SKID PLATE

- Protects the vulnerable areas of boats simply, effectively & inexpensively
- Keeleazy strip is a self-adhesive PVC strip that provides an extremely durable surface anywhere that abrasion is a concern
- Lighter and more abrasion resistant than traditional keel strips made of fibreglass, TPE and gel coat and gives a smooth, professional looking finish
- Available in 7 colours: Red, Yellow, Green, Blue & Orange as well as the original Black & White
- The versatile, quick and inexpensive solution to avoiding scrapes, scuffs & dings
- Sticks to almost any material (we haven't found anything it won't stick to yet!)
- Ideally suited to the keels of kayaks, boats, canoes, jet skis, car doors etc....
- Easily applied to fibreglass, Polyethylene, thermoformed ABS, skin on frame, canvas, Roylex and metal surfaces and can be moulded over compound curves with the use of a heat gun
- Ideal for rental fleets, schools and training centres - giving an extra season on the boats and an increased return on investment
- Can be applied full length or on specific wear spots and removed by applying heat from a hair dryer or heat gun and peeling it away.



## HEELEAZY PATCHES

**Uses:** Prevents excess wear under the foot area of your kayak. Available in all seven colours.

**CODE: HE £8.00**



## SKID PLATE STRIPS

**Uses:** Protection for the most vulnerable areas of canoes & dinghies - the bow & stern. Available in all seven colours.

**CODE: SP £18.00**



## KEELEAZY ROLLS

1 x 30m x 50mm WIDE ROLL

**CODE: KE-2-ROLL £216.00 per roll**

1 x 30m x 100mm WIDE ROLL

**CODE: KE-4-ROLL £432.00 per roll**

## KEELEAZY BY THE METRE

50mm WIDE ROLL

**CODE: KE-2 £8.00 per metre**

100mm WIDE ROLL

**CODE: KE-4 £16.00 per metre**



## EXTREMELY DURABLE, SELF ADHESIVE PEEL AND STICK INSTANT REPAIR/ PROTECTION PATCHES

**One pack contains** - Six patches of random colours and sizes complete with 2 Isopropyl alcohol cleaning wipes and instructions.



**Repair, Protect, Personalise, the list goes on...** Inflatables, Canoes, Jet skis, Kayaks, Car Soft Roof, Car Plastic Trim, Sail, Kite and Board Repair, Wader, Welly Repair, Tent, Awning, Groundsheet, Horse Rug Repair, Dings on Surfboards, Garden Furniture, Household plastic items.

Can be removed by applying heat from a hair dryer or heat gun and peeling them off.

## DINGDOT PATCHES

**Uses:** Cover over leaks and rips on a wide range of surfaces, like leather nylon, coated and uncoated fabrics, plastics, glass, metal, wood and much more. These patches are flexible, abrasion resistant and very strong. They are especially useful on campsites as they work brilliantly on damaged tarpaulins, ground sheets, tents and also water containers with leaks, cracked buckets etc. Please call if you require a pack of specific colours.

**COLOURS** [Color swatches]

**CODE: DD £6.00**

# SIZE CHARTS

Before ordering please check your sizes here

## SIZE CHART ONE AQUATHERM CAGS

| SIZE         | S                      | M                       | L                        | XL                       | XXL                      |
|--------------|------------------------|-------------------------|--------------------------|--------------------------|--------------------------|
| <b>CHEST</b> | 30" - 35"<br>76 - 89cm | 35" - 40"<br>89 - 102cm | 40" - 45"<br>102 - 114cm | 45" - 50"<br>114 - 127cm | 50" - 55"<br>127 - 140cm |
| <b>WAIST</b> | 20" - 30"<br>51 - 76cm | 25" - 35"<br>63 - 89cm  | 30" - 40"<br>76 - 102cm  | 35" - 45"<br>89 - 114cm  | 40" - 50"<br>102 - 127cm |

## SIZE CHART TWO PADDLESUIT AND DRY TROUSERS

| SIZE                 | SHORT           | MID           | LONG          |
|----------------------|-----------------|---------------|---------------|
| <b>HEIGHT INCHES</b> | 5' - 5'3"       | 5'4" - 5'8"   | 5'9" - 6'4"   |
| <b>HEIGHT CM</b>     | 152.5 - 160.5cm | 162.5 - 173cm | 175.5 - 193cm |

## SIZE CHART THREE NEOPRENE AND AQUATHERM DECK WAIST TUBE

| SIZE                | S    | M    | L    | XL   | XXL   |
|---------------------|------|------|------|------|-------|
| <b>WAIST INCHES</b> | 28"  | 31"  | 34"  | 37"  | 40"   |
| <b>WAIST CM</b>     | 72cm | 79cm | 86cm | 93cm | 102cm |

## SIZE CHART FOUR AQUATHERM ADJUSTABLE DECK AND WAIST TUBE

| SIZE                | S/M  | L/XL  | XXL   |
|---------------------|------|-------|-------|
| <b>WAIST INCHES</b> | 36"  | 42"   | 50"   |
| <b>WAIST CM</b>     | 91cm | 107cm | 127cm |

# SIZE CHARTS

## SIZE CHART FIVE AQUATHERM MENS TOPS

| SIZE         | S                      | M                      | L                       | XL                       | XXL                      | XXXL                     |
|--------------|------------------------|------------------------|-------------------------|--------------------------|--------------------------|--------------------------|
| <b>CHEST</b> | 33" - 35"<br>84 - 89cm | 36" - 38"<br>91 - 97cm | 39" - 41"<br>99 - 104cm | 42" - 44"<br>107 - 112cm | 45" - 47"<br>114 - 119cm | 48" - 51"<br>122 - 130cm |
| <b>WAIST</b> | 29" - 34"<br>74 - 86cm | 31" - 36"<br>79 - 91cm | 33" - 37"<br>84 - 94cm  | 36" - 41"<br>91 - 104cm  | 39" - 44"<br>99 - 112cm  | 42" - 46"<br>107 - 117cm |

## SIZE CHART SIX AQUATHERM HEAD GEAR

| SIZE            | S           | M           | L           | XL          |
|-----------------|-------------|-------------|-------------|-------------|
| <b>FOREHEAD</b> | 21"<br>53cm | 22"<br>56cm | 23"<br>58cm | 24"<br>61cm |

## SIZE CHART SEVEN AQUATHERM WOMENS TOPS

| SIZE         | XS                     | S                      | M                      | L                      | XL                      | XXL                      | XXXL                     |
|--------------|------------------------|------------------------|------------------------|------------------------|-------------------------|--------------------------|--------------------------|
| <b>BUST</b>  | 30" - 32"<br>76 - 81cm | 32" - 34"<br>81 - 86cm | 34" - 36"<br>86 - 91cm | 36" - 38"<br>91 - 97cm | 38" - 40"<br>97 - 102cm | 40" - 42"<br>102 - 107cm | 42" - 44"<br>107 - 112cm |
| <b>WAIST</b> | 23" - 27"<br>58 - 69cm | 25" - 29"<br>63 - 74cm | 27" - 31"<br>69 - 79cm | 29" - 33"<br>74 - 84cm | 31" - 35"<br>79 - 89cm  | 33" - 37"<br>84 - 94cm   | 35" - 39"<br>89 - 99cm   |
| <b>HIP</b>   | 29" - 33"<br>74 - 84cm | 31" - 35"<br>79 - 89cm | 33" - 37"<br>84 - 94cm | 35" - 39"<br>89 - 99cm | 37" - 41"<br>94 - 104cm | 39" - 43"<br>99 - 109cm  | 41" - 45"<br>104 - 115cm |

## SIZE CHART EIGHT AQUATHERM SOCKS (+WADING)

| SIZE           | S       | M       | L       | XL      | XXL      |
|----------------|---------|---------|---------|---------|----------|
| <b>UK SHOE</b> | 1 - 3   | 4 - 6   | 7 - 9   | 10 - 11 | 12 - 13  |
| <b>US SHOE</b> | 3 - 4   | 5 - 7   | 8 - 10  | 11 - 13 | 14 - 14½ |
| <b>EU SHOE</b> | 34 - 36 | 37 - 39 | 40 - 44 | 45 - 46 | 47 - 48  |

## SIZE CHART NINE AQUATHERM TROUSERS AND SHORTS

| SIZE         | S                      | M                      | L                       | XL                       | XXL                      | XXXL                     |
|--------------|------------------------|------------------------|-------------------------|--------------------------|--------------------------|--------------------------|
| <b>WAIST</b> | 25" - 28"<br>63 - 71cm | 28" - 31"<br>71 - 79cm | 31" - 34"<br>79 - 86cm  | 34" - 37"<br>86 - 94cm   | 37" - 40"<br>94 - 102cm  | 40" - 44"<br>102 - 112cm |
| <b>HIP</b>   | 31" - 34"<br>79 - 86cm | 34" - 37"<br>86 - 94cm | 37" - 40"<br>94 - 102cm | 40" - 42"<br>102 - 107cm | 42" - 44"<br>107 - 112cm | 44" - 46"<br>112 - 117cm |

## SIZE CHART TEN TRANSPIRE FLEECE PANTS

| SIZE              | S                      | M                      | L                      | XL                      | XXL                      |
|-------------------|------------------------|------------------------|------------------------|-------------------------|--------------------------|
| <b>WAIST</b>      | 21" - 28"<br>53 - 71cm | 26" - 33"<br>66 - 84cm | 31" - 38"<br>79 - 97cm | 36" - 45"<br>91 - 114cm | 42" - 50"<br>107 - 127cm |
| <b>INSIDE LEG</b> | 29"<br>74cm            | 29"<br>74cm            | 31"<br>79cm            | 31"<br>79cm             | 31"<br>79cm              |

## SIZE CHART ELEVEN TRANSPIRE FLEECE SOCKS

| SIZE           | S       | M       | L       | XL      |
|----------------|---------|---------|---------|---------|
| <b>UK SHOE</b> | 2 - 4   | 5 - 8   | 9 - 11  | 12 - 14 |
| <b>EU SHOE</b> | 35 - 37 | 38 - 42 | 42 - 46 | 46 - 48 |

## SIZE CHART TWELVE TRANSPIRE FLEECE TOPS

| SIZE         | S                      | M                      | L                       | XL                       | XXL                      |
|--------------|------------------------|------------------------|-------------------------|--------------------------|--------------------------|
| <b>CHEST</b> | 29" - 34"<br>74 - 86cm | 34" - 39"<br>86 - 99cm | 39" - 44"<br>99 - 112cm | 44" - 50"<br>112 - 127cm | 47" - 55"<br>119 - 140cm |
| <b>WAIST</b> | 24" - 30"<br>61 - 76cm | 27" - 36"<br>69 - 91cm | 33" - 42"<br>84 - 107cm | 36" - 45"<br>91 - 115cm  | 42" - 50"<br>107 - 127cm |

## SIZE CHART THIRTEEN TRANSPIRE FLEECE ONE PIECE

| SIZE                | S                      | M                      | L                       | XL                       | XXL                      |
|---------------------|------------------------|------------------------|-------------------------|--------------------------|--------------------------|
| <b>CHEST APPROX</b> | 29" - 34"<br>74 - 86cm | 34" - 39"<br>86 - 99cm | 39" - 44"<br>99 - 112cm | 44" - 50"<br>112 - 127cm | 47" - 55"<br>119 - 140cm |
| <b>WAIST APPROX</b> | 24" - 30"<br>61 - 76cm | 27" - 36"<br>69 - 91cm | 33" - 42"<br>84 - 107cm | 36" - 45"<br>91 - 115cm  | 42" - 50"<br>107 - 127cm |
| <b>HIP APPROX</b>   | 24" - 30"<br>61 - 76cm | 27" - 36"<br>69 - 91cm | 33" - 42"<br>84 - 107cm | 36" - 45"<br>91 - 115cm  | 42" - 50"<br>107 - 127cm |

## SIZE CHART FOURTEEN PERTEX QUANTUM JACKETS

| SIZE         | S                      | M                      | L                       | XL                       |
|--------------|------------------------|------------------------|-------------------------|--------------------------|
| <b>CHEST</b> | 30" - 34"<br>76 - 86cm | 34" - 38"<br>86 - 97cm | 38" - 43"<br>97 - 109cm | 43" - 48"<br>109 - 112cm |
| <b>WAIST</b> | 24" - 28"<br>61 - 71cm | 27" - 31"<br>69 - 79cm | 30" - 35"<br>76 - 89cm  | 34" - 40"<br>86 - 102cm  |

## SIZE CHART FIFTEEN KIDS CAG

| SIZE         | M                      | L                      |
|--------------|------------------------|------------------------|
| <b>CHEST</b> | 20" - 25"<br>51 - 63cm | 25" - 30"<br>63 - 76cm |
| <b>WAIST</b> | 20" - 25"<br>51 - 58cm | 22" - 27"<br>56 - 69cm |

## SIZE CHART SIXTEEN KIDS TOPS AND SHORTS

| SIZE         | S - 4 yrs              | M - 6 yrs              | L - 8 yrs              | XL - 10 yrs            | XXL - 12 yrs           |
|--------------|------------------------|------------------------|------------------------|------------------------|------------------------|
| <b>CHEST</b> | 22" - 25"<br>53 - 58cm | 24" - 26"<br>61 - 66cm | 27" - 29"<br>69 - 74cm | 30" - 32"<br>78 - 81cm | 32" - 34"<br>81 - 86cm |
| <b>WAIST</b> | 22" - 25"<br>56 - 63cm | 24" - 27"<br>61 - 69cm | 26" - 29"<br>66 - 74cm | 28" - 32"<br>71 - 81cm | 29" - 33"<br>74 - 84cm |

## SIZE CHART SEVENTEEN TRANSPIRE FLEECE KIDS TOPS

| SIZE         | S - 4-6yrs             | L - 8-10yrs            |
|--------------|------------------------|------------------------|
| <b>CHEST</b> | 26" - 28"<br>66 - 71cm | 30" - 32"<br>77 - 82cm |
| <b>WAIST</b> | 24" - 26"<br>61 - 66cm | 28" - 30"<br>71 - 76cm |

# PADDLESUIT SIZE CHART

## SIZE CHART EIGHTEEN

| SIZE              | S                             | M                              | L                              | XL                               | XXL                          |
|-------------------|-------------------------------|--------------------------------|--------------------------------|----------------------------------|------------------------------|
| <b>CHEST</b>      | 30" - 35"<br>76 - 89cm        | 35" - 40"<br>89 - 102cm        | 40" - 45"<br>102 - 114cm       | 45" - 50"<br>114 - 127cm         | 50" - 55"<br>127 - 140cm     |
| <b>WAIST</b>      | 20" - 30"<br>51 - 76cm        | 25" - 35"<br>63 - 89cm         | 30" - 40"<br>76 - 102cm        | 35" - 45"<br>89 - 114cm          | 40" - 50"<br>102 - 127cm     |
| <b>HIP</b>        | 31" - 34"<br>79 - 86cm        | 34" - 37"<br>86 - 94cm         | 37" - 40"<br>94 - 102cm        | 40" - 44"<br>102 - 112cm         | 44" - 48"<br>112 - 122cm     |
| <b>NECK</b>       | 11 1/4" - 13"<br>30 - 33cm    | 13" - 14 1/2"<br>33 - 37cm     | 14 1/2" - 15 1/4"<br>37 - 40cm | 15 1/4" - 16 1/4"<br>40 - 42.5cm | 16 1/4" - 18"<br>42.5 - 46cm |
| <b>WRIST CUFF</b> | 6" - 6 1/2"<br>15 - 16.5cm    | 6 1/2" - 7"<br>16.5 - 17.75cm  | 7" - 7 1/2"<br>17.75 - 19cm    | 7 1/2" - 8"<br>19 - 20.5cm       | 8" - 8 1/2"<br>20.5 - 21.5cm |
| <b>HEIGHT</b>     | <b>SHORT</b>                  | <b>MID</b>                     | <b>LONG</b>                    |                                  |                              |
|                   | 5' - 5' 4"<br>152.5 - 162.5cm | 5' 4" - 5' 8"<br>162.5 - 173cm | 5' 8" - 6' 4"<br>173 - 193cm   |                                  |                              |

# MEASURING FOR MADE TO MEASURE

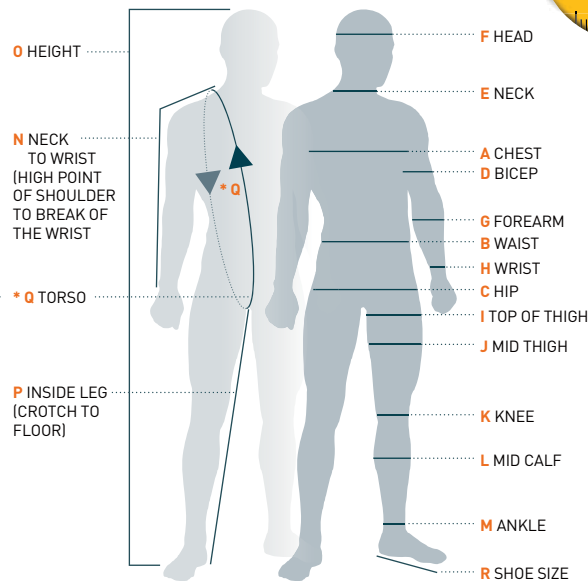
**MADE TO MEASURE SERVICE** – If you don't feel a standard size product will fit you comfortably a made to measure service is available at an additional cost of £50.00. Please specify your measurements with your mail order using the chart below or visit our website and use the on line measurement chart.

CAN BE  
MADE TO  
MEASURE

It is very important for a correct fit that the measurements you submit are as accurate as possible.

- Measure yourself in a relaxed state.
- Measure yourself carefully and accurately.
- Measure yourself in your underwear or naked.

**\* To take a torso (Q) measurement,** measure from where your neck meets your shoulder, take the tape down the front under the crotch and up the back to the same starting point. A good tip is to use a piece of string, then measure the string along a ruler.



Once you are happy with your measurements please fill in the table and send it with your order



# ORDERING GUARANTEE AND CUSTOMER CARE

**By Mail Order:** Ordering by post is simple - complete our order form on the next page, detach it carefully from the centre fold, and return it with credit card payment details or a cheque payable to **'Reed Chillcheater Ltd'**

Then Post To: **Reed Chillcheater Ltd, Chapel Street, Braunton, North Devon EX33 1EL United Kingdom**

**By Fax:** Orders can be taken by our 24 hour fax machine on 01271 816199.

**Online:** Browse the catalogue section of our Online Brochure at [www.chillcheater.com](http://www.chillcheater.com) Select the product, the size you require and the quantity and click 'add to basket' icon.

**By Telephone:** Call our friendly staff for order and sales advice on 01271 815828 from Mon-Fri 9am-5pm (UK).

**From Our Dealers:** Please enquire for your nearest stockist or visit the website [www.chillcheater.com](http://www.chillcheater.com)

**Our Guarantee:** Reed Chillcheater takes pride in keeping all of its customers happy and satisfied with its products and services. Goods are guaranteed for defective workmanship and materials for up to one year, but not for misuse. If, for any reason, you are not entirely happy, please contact us to discuss a refund or product exchange prior to mailing your return. Mail to [info@chillcheater.com](mailto:info@chillcheater.com) or call 01271 815828.

**Availability:** Most items are held in stock and we will make every effort to dispatch within the same week that the order is received. For items that are bespoke, or out of stock, please allow up to 30 days for delivery. For an estimated delivery date please contact us on 01271 815828 and if you need any items by a specific date we will do our very best to supply the goods in time!

## Delivery and Shipping Prices:

**UK Deliveries** are made by Royal Mail Packet Post and Parcel Force at charges starting from £4.60\*

**Western Europe Deliveries** are made by courier or Royal Mail or Parcel Force at charges starting from £9.60\*

For details of prices and our fast tracking services please see our website [www.chillcheater.com](http://www.chillcheater.com)

**For Rest of World Deliveries** please see our web site.

**\*SHIPPING PRICES ARE CORRECT AT TIME OF GOING TO PRESS. PRICES MAY BE SUBJECT TO CHANGE WITHOUT NOTICE.**

**PLEASE CONSULT OUR WEBSITE AT [www.CHILLCHEATER.COM](http://www.CHILLCHEATER.COM)**

**Exchanges and Refunds UK Customers:** Unused garments can be returned in good condition in original packaging, within 30 days for an exchange or a refund (excluding postage).

**Overseas Customers, Customs and International Duty Tariffs:**

Please note that all overseas parcels may be subject to Duty Taxes at point of entry into your country. These tariffs vary from country to country.

Reed Chillcheater Ltd have no control over these possible extra charges to customers.

**Exchanges and Refunds Overseas Customers:** Unused garments can be returned within 30 days for an exchange or a refund, in original packaging, (excluding carriage).

**OVERSEAS CUSTOMERS, PLEASE FIRST CALL OR EMAIL OUR OFFICE IF YOU HAVE GOODS FOR REFUND OR EXCHANGE.**

Please note that these overseas packages should be clearly marked "Goods for 'Exchange' or 'Goods for Refund' or 'Goods for Repair' (select appropriate) and marked as having 'ZERO VALUE', for Customs duty purposes.

**OVERSEAS CUSTOMERS, PLEASE DO NOT USE A COURIER SERVICE TO RETURN OR EXCHANGE ITEMS.**

Courier items incur handling, duty, clearance and VAT charges. We cannot sign for/accept/returns/exchange/repair packages sent by Courier unless this form of delivery has been agreed upon by us.

**Repairs to Garments? What to do:** The great outdoors can take its toll on clothing. With normal use your Reed garments should give you good serviceable use. For smaller rips and tears we can send out our 'KIT 10' at a cost of £3.00 plus carriage. We can sometimes help even on larger repairs. There is a charge for this service.

**PLEASE FIRST CALL OR EMAIL OUR OFFICE PRIOR TO SENDING GOODS BACK FOR REPAIR. (MAIL TO, [INFO@CHILLCHEATER.COM](mailto:INFO@CHILLCHEATER.COM) OR CALL US ON +44 (0) 1271 815828).**

**Reed Privacy Policy:** By providing your details to Reed Chillcheater Ltd, you consent to us maintaining, recording, holding and using the information you give us at the time of ordering:

- To process your orders
- To improve our service to you

All data is collected lawfully and maintained in accordance with the Data Protection Act 1998. Your personal details will only be passed to other companies involved in the processing of your order. None of your personal details will be passed to any other third parties for any other reason.

| MEASUREMENTS    | CM | INCH |
|-----------------|----|------|
| A CHEST         |    |      |
| B WAIST         |    |      |
| C HIP           |    |      |
| D BICEP         |    |      |
| E NECK          |    |      |
| F FOREHEAD      |    |      |
| G FOREARM       |    |      |
| H WRIST         |    |      |
| I TOP OF THIGH  |    |      |
| J MID THIGH     |    |      |
| K KNEE          |    |      |
| L MID CALF      |    |      |
| M ANKLE         |    |      |
| N NECK TO WRIST |    |      |
| O HEIGHT        |    |      |
| P INSIDE LEG    |    |      |
| Q TORSO         |    |      |
| R SHOE SIZE     |    |      |